

# TEXTILENE® 90

BRAND FABRIC

TEXTILENE® 90 son tejidos sintéticos duraderos hechos de poliéster recubierto de PVC. Diseñadas para reducir la transferencia de calor y el resplandor solar, nuestras telas pueden reducir el costo total de energía y proteger los muebles de interior. Resistentes a la decoloración, son excelentes opciones para una variedad de usos en interiores o exteriores. TEXTILENE® 90 bloquea hasta el 90% de los rayos solares.

## CERTIFICACIONES



REACH  
COMPLIANCE



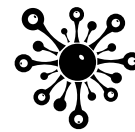
GREENGUARD  
GOLD



FLAME  
RESISTANT



LEAD  
FREE



ANTIMICROBIAL



PRINTABLE



RoHS  
COMPLIANT



LIMITE  
WARRANTY



TOY ACT



MADE IN USA

## TEXTILENE 90® SHADE FACTOR

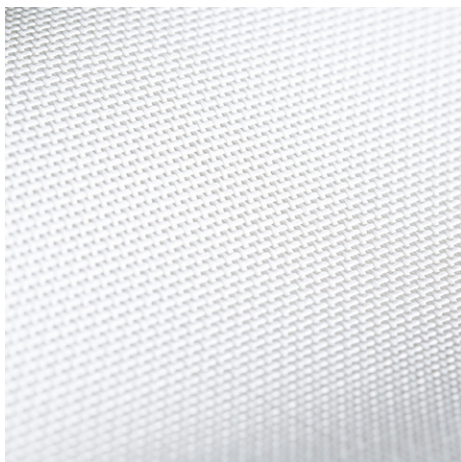
Textilene Exterior Window Shade Solar Screen													
								Shading Coefficient					
Profile	Total Solar			Visible			UV	O.F.	1/8" Clr.	1/4" Clr.	1/4" Clr.	Clr. Dbl.	HA/ Dbl.
Angle	Trans.	Ref.	Abs.	Trans.	Ref.	Abs.	Trans.						
0	0.13	0.0	0.83	0.14	0.06	0.78	0.15	0.13	0.23	0.23	0.22	0.19	0.16
45	0.09	0.06	0.86	0.11	0.06	0.83	n/a	n/a	0.19	0.19	0.18	0.15	0.14

## INFORMACIÓN TÉCNICA

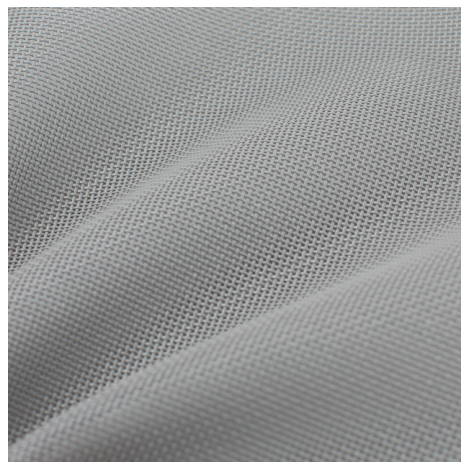
Attribute	ASTM	Warp	Fill	Typical
Construction, end/inch	D3775-12	20.0 ±0.5	18.0 ±0.5	
Weight, oz/yd	D3776-09			15.8
Weight, g/m	D3776-09			535.8
Tensile Strength (grab), lbf / daN	D5034-09	608.3/275.9	527.3/239.2	
Tensile Strength (strip), lbf / daN	D5035-11	269.8/121.9	225.3/102.2	
Tear Strength (trapezoidal), lbf / daN	D5733	68.3/31.0	67.6/30.7	
Elongation, %	D5035-11	29.3	29.8	
Abrasion Resistance <small>(CS10/500 cycles/ with no added weight)</small>	D3884-09		No Exposure of Core Yarn	
Flammability Rating			CA Title 19 & NFPA 701	
Weatherability, 1200 hours	G154		Trace Discoloration	
Mildew Resistance	G21-13		No growth	
Thickness, inches/mm	D1777-96			.0345"/.8763mm

## TEXTILENE 90

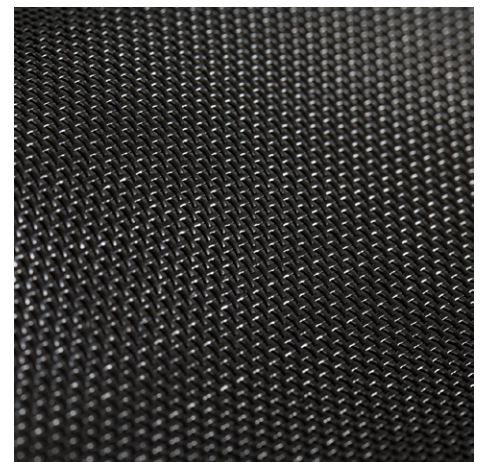
Excelente factor de sombra de hasta el 90%



White



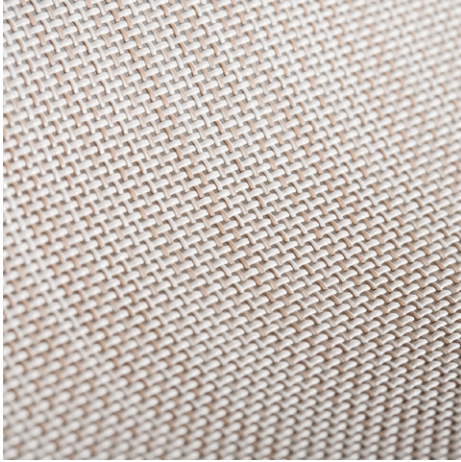
Grey



Black

# TEXTILENE® 90

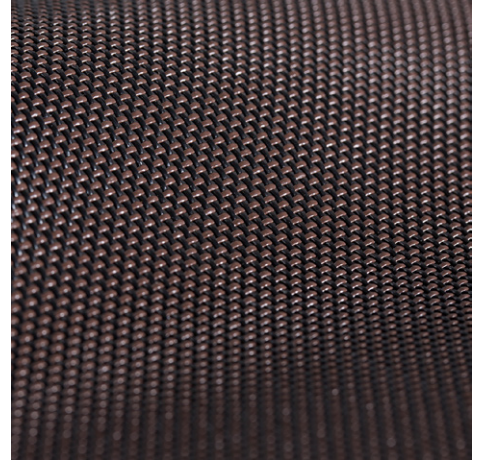
BRAND FABRIC



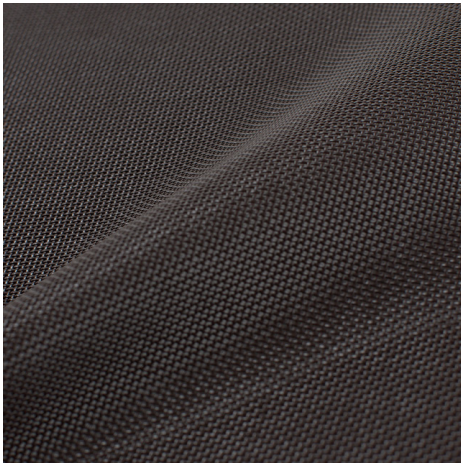
**Desert Sand**



**Beige**



**Brown Black**



**Brown**