

TEXTILENE® *nano*™ 95

BRAND FABRIC

TEXTILENE® nano™ 95 es un tejido sintético ligero y duradero. Es más ligero y fino con las mismas cualidades técnicas que el TEXTILENE® original. TEXTILENE® nano™ 95 es excelente para exteriores y uso interior. Es resistente al fuego, a la decoloración y puede reducir los costos de energía mientras se bloquea el 95% de los rayos dañinos del sol.



REACH
COMPLIANCE



GREENGUARD
GOLD



FLAME
RESISTANT



LEAD
FREE



PRINTABLE



RoHS
COMPLIANT



LIMITED
WARRANTY



MADE IN USA

Shade Factor

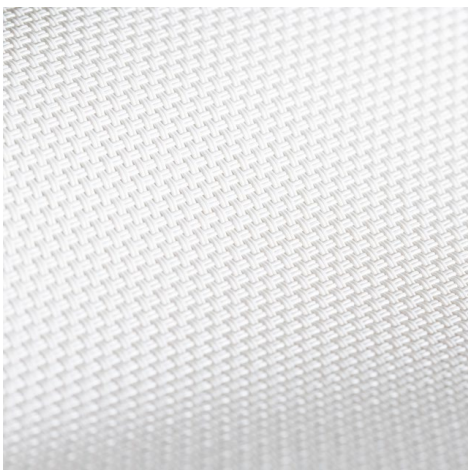
Style	Total Solar			Visible			Insulating Glass			Insulating		
	Ts	Rs	As	Ts	Rs	As	1/2" Clr.	1" Clr.	1" HA	1/2" Clr.	1" Clr.	1" HA
Flat Black Profile Angle 0	8	4	88	8	4	88	0.26	0.21	0.16	0.20	0.13	0.11
Flat Black Profile Angle 45	5	8	87	6	9	85	0.15	0.15	0.15	0.11	0.11	0.11

Información Técnica

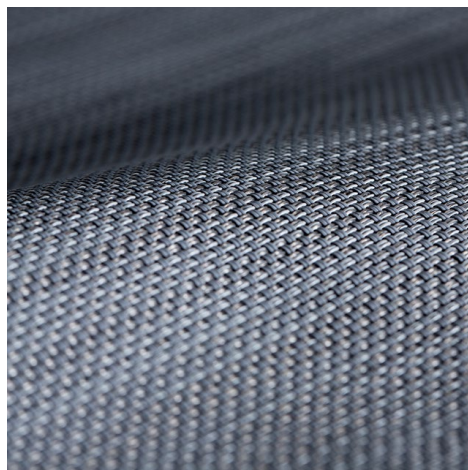
Attribute	ASTM	Warp	Fill	Typical
Construction, end/inch	D3775-17	36.0 ±0.5	34.0 ±0.5	
Weight, oz/yd ²	D3776-09			14.7
Weight, g/m ²	D3776-09			498.5
Tensile Strength (grab), lbf / daN	D5034-09	423.6 / 192.1	382.2 / 173.4	
Tensile Strength (strip), lbf / daN	D5035-11	218.5 / 99.1	188.4 / 85.5	
Tear Strength (trapezoidal), lbf / daN	D1117-99	58.4 / 26.5	42.2 / 19.1	
Elongation, %	D5035-11	12.7	11.6	
Abrasion Resistance (CS10/500 cycles/ with no added weight)	D3884-09		No Exposure of Core Yarn	
Flammability Rating			CA Title 19 & NFPA 701	
Weatherability, 1200 hours	G154-16		No Discoloration	
Mildew Resistance	G21-13		Pass	
Thickness, inches / mm	D1777-15			0.026 / 0.66

TEXTILENE NANO 95

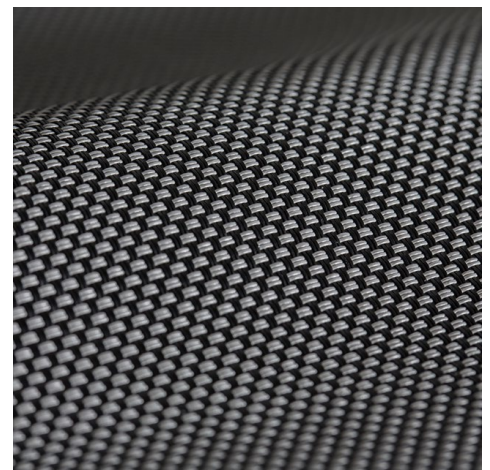
Excelente factor de sombra de hasta el 95%



White



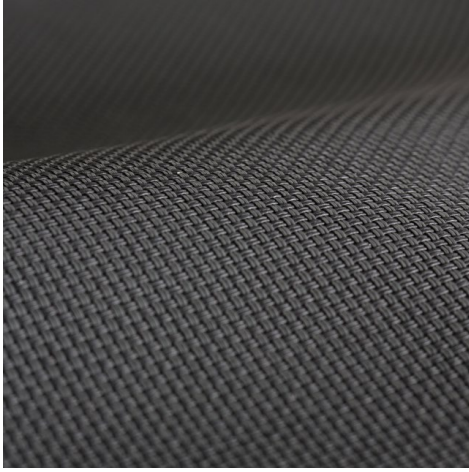
Shadow Texture



Granite

TEXTILENE[®] nano[™] 95

BRAND FABRIC



Charcoal



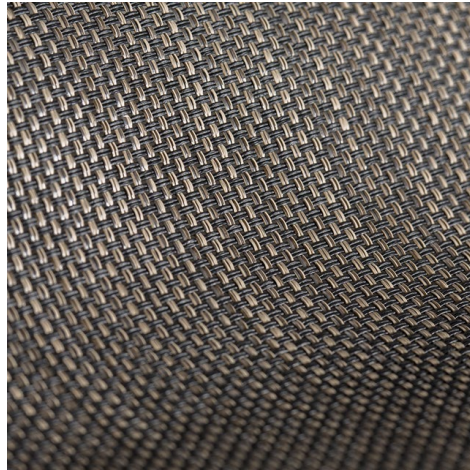
Bone



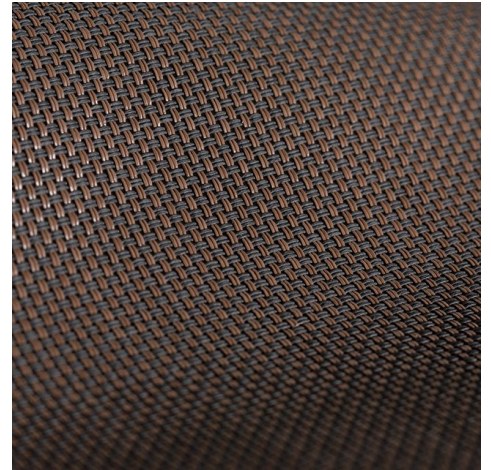
Black



Stone Texture



Espresso Texture



Tobacco